

Wembdon Parish Paper

Edition 17



Connecting with our community



Wembdon Cricket Club bid farewell to their Chilton Trinity ground and prepare to move back to Wembdon Village.

Latest News:

A post and bar fence incorporating a pedestrian access, replaces the temporary fencing alongside Wembdon Parkland and Oak Apple Drive, much improving the view. This area is now well used which is a delight to see.

A new bench donated to the village by the WCA has been installed on the playing fields for your enjoyment of the views and recreational activities.

An additional dog waste bin has been sited at the Wembdon Parkland NDR entrance.

The posts along the raised pavements on Church Road have been repainted in keeping with the Wembdon village scene and are very much improved.

The phone box has been cleaned – please inform us if you find it to be in a poor state again in the future. The bus shelter is the responsibility of the parish council and its ongoing maintenance is under review. It will be re-painted in the first instance.

SCC have now undertaken the repair of several potholes around the village.

Repair work to the surface of the children's play area is complete and the swing chains have been replaced. Vandalism to the fence is being assessed for repair / replacement. This costs us, as a village, a lot of money so we would please encourage people to use it appropriately and report any misuse.

WPC are exploring the use of CCTV to protect council property for your continued use.

The small rhynes have been cut and the cuttings are to be cleared away imminently.

The benches at the allotments have had to be removed in response to residents' reports of antisocial behaviour in the area. These will be re-sited when appropriate.

Please park considerately throughout the village. Unfortunately the bus service through Wembdon recently had to be suspended due to inconsiderate parking along Wembdon Hill. This caused great inconvenience to those who rely on this service. Please also consider the access for emergency vehicles and the serious consequences.

If you wish to access the Police Report to WPC it is recorded in the meetings Minutes.

Finally, how lovely to see our improved green spaces being well used by so many from all aspects of the community....just remember to put your litter in the bins please! 😊

WEMBDON VILLAGE HALL & PLAYING FIELD TRUST

The Trustees project update:

The official opening events will take place over the early May Bank Holiday weekend 2017 (Fri-Mon Inclusive).

Now appointed: Harris Bros and Collard to complete the hall.

Dobles to construct the road access - awaiting a time slot from SCC Highways

May 2016 pitches in use.

Jan 2017 Hall completed.

Spring Term 2017 Sunshiners Pre School (commence sessions in their new setting)

February 2017 a series of open days to book events or activities. (These will be widely advertised)

March 2017 commencement of some groups/events. All those groups who have already expressed an interest will be contacted.

Autumn 2016 volunteer posts advertised - booking secretary, office manager, treasurer, caretakers, cleaners etc.

Sponsor a plaque on a bench £250

Please feel free to contact as we have a sub-committee currently working on these areas.

In early November twenty mature Oaks and two hundred native saplings from The Woodland Trust will be planted around the playing fields. Students from Cannington College, St George's School, Sunshiners and other local groups are being invited to take part in the planting of saplings. The Give an Hour (or 2) on November 12th will also be a planting day so all are welcome to come and help. Dates and times will be posted at the bus shelter.

The Green Wembdon

info@wembdonvillagehall.co.uk

call 07594 299533

twitter @greenwembdon

facebook

www.wembdonvillagehall.co.uk



*The
Green*
Wembdon

“ A Village Hall, Sports Ground and Open Space ”

GIVE - AN - HOUR (or TWO).

I have decided to change the title, Give-a- Day is no more!!!

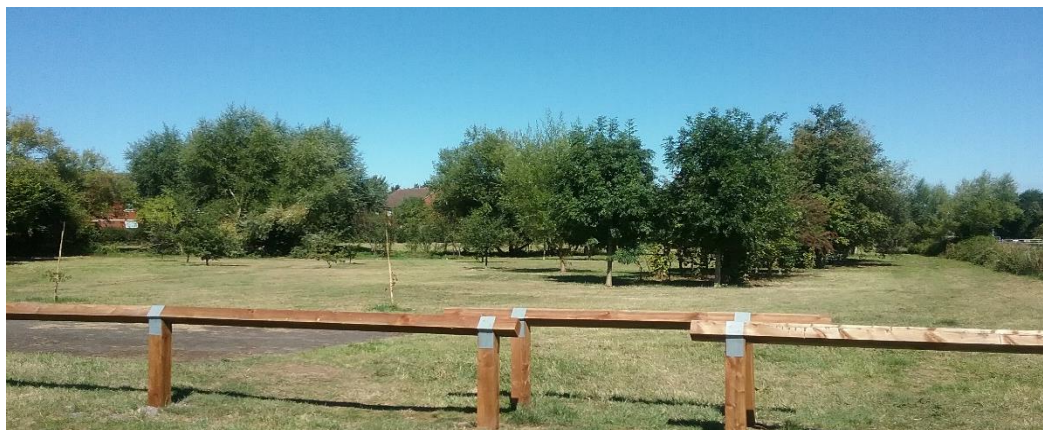
Seriously, I am just looking to get more people involved in our ongoing project to improve our Wembdon Parkland behind the Village Hall. With a 10.00am start, I am hoping that more of us can offer an hour or two of labour in a push to have the Parkland more people friendly by the time the Village Hall is finished (end of 2016).

There is still a lot to do around the edges and this involves thinning out the hedges, cutting down large brambles that have been left to run wild for years and trying to wrest control from well-established nettle beds. Regulars come equipped with whatever gardening tools they have and good gloves are a must. We are always short of helpers who can bring a petrol strimmer as it can make light work of strenuous tasks. There is no need to contact anyone, just arrive near the bridge that crosses the NDR into Church Path.

About a week before each session I put up a 'reminder' notice on the bridge at the bottom of Wares Lane so look out for that.

Dates for your diary;

- 1. Sat 15th October 10.00am start**
- 2. Sat 12th Nov 10. 00am start**
- 3. Sat 10th Dec 10.00am start**



Last year we received a real boost with our efforts when our local Environment Agency office in Bridgwater offered their support. They are able to give up their desk jobs for the day and get involved with local projects. Ken Moss, who lives in the village, organised a team of about 10 willing workers who gave a day to our project. What a difference they made AND they want to come back!!! Ken and I have booked the team for Friday 14th Oct and I look forward to their continued involvement.

Things have fallen a bit flat in the village as work on the Village Hall has stalled. However, by the time you read this, our new contractors HBC construction should be well on their way to completing the hall by the end of the year. I hope this encourages lots of you to help us to make sure the surrounding area is the best it can be.

See you on the 15th October Neil Harrison

Allotments

Just a brief note at the end of a busy summer for allotment users.

We have let allotments to 6 new people in the village but I have now exhausted my waiting list. There are still 4 allotments available for rent and

I would be happy to show them to anyone who is interested.

So, please contact me on 01278 457549 if you would like to meet at the allotments. Alternatively, e-mail me at harrison.neil96@yahoo.com

I look forward to meeting you. Neil Harrison





On the 30 March 2016 **The Cottage Inn** was purchased by local couple Rachael Caswell & Clive Lilley. We were both born and have grown up in Bridgwater and have lived in Wembdon in more recent years, a village we both love. We started with building works almost immediately and on the August Bank Holiday weekend held a party in the pub carpark to celebrate a new era at the pub and to cement our arrival. Local regular Pete Bond who has frequented the pub over many decades cut the ribbon to officially re-open the business. The current opening hours are Monday - Thursday 4pm to close, on Fridays from 2pm to close and all day from 12 noon on Saturdays and Sundays. There is live music every Saturday evening from 9pm and a monthly quiz on the last Tuesday evening of each month which is hosted by the respected local quiz master Roger Evans. We will shortly be starting a vinyl night - bring your own vinyl records along to play. We are very excited about the future of the pub and look forward to welcoming faces old and new. Keep an eye on facebook or call 01278 423259 for more details. Thank you.





On Sunday 4th September 2016 **Wembdon Cricket Club** held it's last ever fixture at its Chilton Trinity School ground. Formed back in 1920 the club originally played in the fields of Perry Green but for many years in the days before league cricket it became a wandering side with no fixed home. When league cricket was established in the late 70's all sides needed a home ground so Wembdon Cricket Club formed a partnership with Chilton School.

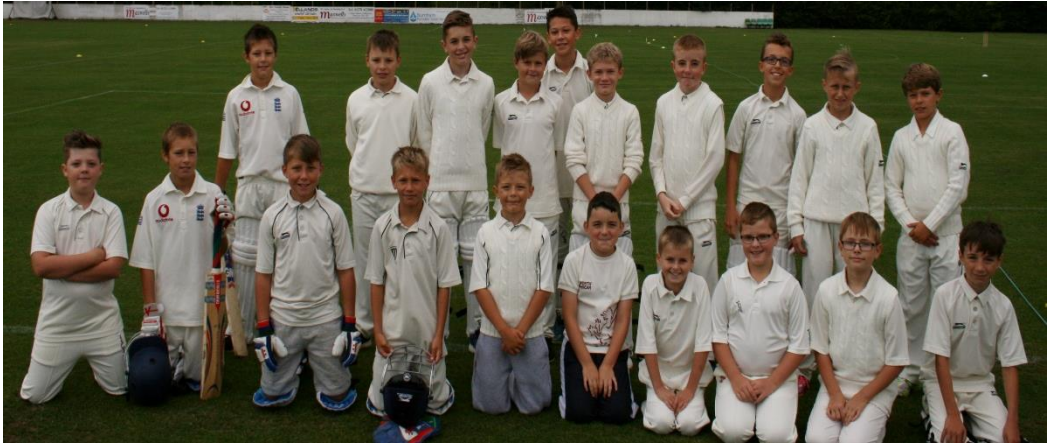
The club originally played behind the old sports centre and established a second ground in the process. That second ground became the main ground and is now the schools only field with the original ground being lost when the school was rebuilt. The club have played at Chilton for 40 years and in that time have gone from just one side to now running four Saturday XI's, 1 Sunday XI, Ladies XI and over 100 boys and girls aged between 5 and 16 years.

The last ever game saw sides from every age group compete against each other throughout the day with the last game also including fifteen former/retired players who wanted to be a part of the last piece of action. Over one hundred players took part throughout the day and many more friends and families came down to celebrate the day.

Wembdon Cricket Club are now gearing up for their first full season at the new ground in the heart of the village with both pitches and all our sides in action from April 2017 onwards. The club is busy preparing behind the scenes and supporting the Trust to ensure everything is up and running. We are particularly looking forward to being in the heart of our community for the first time and the support that will come from that.

The club is looking for support to help fund an electronic scoreboard to position on the garage with sponsorship opportunities available. If anyone or any local business would like to support the club please get in touch by emailing wembdoncricket@gmail.com Thank you.

Wembdon Cricket Club 2016 - U11's, U13's, U15's



Girl's U13's & Ladies XI, Senior Players, Retired Players.



UPDATE! - Traffic, Roads, Cycle paths and Footpaths in Wembdon.

Sandford Hill - The 30mph 'gateway' into the village will soon be moved closer to Sandford roundabout. It is hoped that this will reduce the speed by traffic entering the village.

Wembdon Rise/Inwood Road Junction - Some of you may have noticed the spray paint and surveyors recently on Wembdon Rise. This work is paving the way for a Zebra crossing subject to funding, and installed close to where the present school crossing operates. As part of the works the road will be narrowed and the pathways widened. New permanent and temporary signage and a non-skid surface will also be installed.

Parking above the junction of Wembdon Rise and Homberg Way - WPC has asked Somerset County Council to ticket illegally parked vehicles in that area.

Inconsiderate parking across the parish has led to complaints and WPC have urged SCC to ticket vehicles parking on pavements and causing an obstruction (room for emergency vehicles and refuse collections). Parking is generally not a Police matter and so all complaints should be addressed to SCC.

Speeding Traffic - WPC recognise that there is increasing concern regarding speed through the village. The council are awaiting Highways to install posts in six locations in the village to mount the Speed Indicating Device (SID), these will be moved and data downloaded to provide evidence for further traffic calming measures. At present the average speed on the village roads is below the threshold that will attract funding for further speed reduction measures, of course this is a positive however the average speed on our parish roads still exceeds the speed limit.

Speedwatch - Concerned residents can consider joining the Speedwatch team who are always seeking new volunteers to deter speeding through the village on a regular basis. Contact the Parish Clerk for more details. The bottom line is that evidence shows that the majority of speeding vehicles in the parish are residents and so we must each look to ourselves to keep to a safe speed.

School Traffic - The new parking restrictions adjacent to St Georges School have made the area safer for all. WPC continues to support the Lollipop crossing patrol and parents are urged not to drive children to school in order to reduce congestion and provide a safer environment our children.

Cycle paths - It is hoped that funds will be made available to construct three new cycle paths through the village. Two cycle paths will link the NDR to St Georges School, from the roundabout and from the pedestrian crossing. A further cycle path will link Trinity Way via Church Path all the way through the village eventually linking the village with Cannington. A cycle path was considered from the NDR to Wares Lane but the lane does not meet the minimum width requirements in addition there are ownership issues concerning Wares Lane.

Paths and Rights of Way - WPC will soon be inviting for tenders to maintain the numerous hedgerows along our village paths to maintain free movement. WPC have increased the scope to include some public rights of way around the allotment area and also across the Wembdon Parkland.



Update on St George's Parish Centre Building Project The build is on!

Following the amazing response to the gift day in July which made it possible to go ahead with the build, the building team have been working very hard to move the project forward.

We are pleased to be able to give dates for the start of the work.

The Coffee Shop, Youth and Community Room and Scout Hut will no longer be in use week commencing Monday 14th November. Contractors will begin to prepare the site ready for the demolition to begin week beginning 21st November. This will be completed before Christmas. The build will commence in the New Year. The users have been informed and every effort is being made to accommodate those users.

Sunday 20th November 3pm Celebration for the buildings prior to demolition, followed by tea in the Parish Centre. www.sgw.org.uk

Wembdon St. George's CofE VC Primary School



I think that it is only right to start my news in remembering Mr Elywn Davies who was the first Head Teacher at Wembdon Junior School. He was a wonderful Head Teacher who was respected and well-liked by pupils, parents and staff. He was always interested in what the children were doing, even after they had left St. George's. Mr Davies walked to school with the children; he knew everyone's name and had time for everyone. I have very fond memories of him as my first head teacher and we feel it is fitting to name a classroom after him in recognition of his service to the school.

We now have 14 classes with 392 on roll and some new members of staff. The summer saw a new library take shape, new playground markings appear, external security fencing erected as well as 2 new warming ovens which replaced the original ones from 1972! We have just produced a new website which will include much more information and photographs of what the children are doing. Do have a look if you get a chance. www.wembdonstgeorges.co.uk

This term has got off to a flying start; our 60 reception children are now in every day and settling in really well. Our Year 6 pupils went on school camp in Shropshire at the beginning of September and experienced caving, archery, abseiling and high ropes as well as much more. The whole school had a special celebration of Roald Dahl's 100th birthday where the children dressed up as a character or in yellow - his favourite colour. We had some wonderful costumes. This week our Year 5 took part in a fantastic opera workshop and some will be performing at the Macmillan Theatre next week. The whole school will be fundraising to help support children from Africa who will be here to sing to us in October, and the Year 6 will be involved in a very exciting project working alongside Chinese students based at Knowle Hall over the next three terms. In November there is a drama workshop for our KS2 pupils on anti-bullying.

I am monitoring the parking situation very carefully. Only today, myself and my Deputy were outside at home time asking parents not to park on the yellow lines and zig-zags. I am constantly reminding parents to park safely and considerately so please do let me know if there is anything that is causing you concern. A big thank you to all those adults who come into school to help out with reading and accompanying classes out on their visits and walks to church and to the adults from church who come in and deliver 'Open the Book' – collective worship for KS1 which the children get really excited about.

I always feel privileged on my learning walks around school to pop in to classrooms, sit down with the children and join in with their learning; they are a delight to spend time with and are always enthusiastic to share their work with me. I am already beginning to show parents around school for next year's intake and it is wonderful that so many of them seem to be ex-pupils and have fond memories of their time at Wembdon. I am very proud to continue what Mr Davies started. **Judith Heale, Head Teacher**

WEMBDON COMMUNITY ASSOCIATION

FIREWORKS DISPLAY 2016



Don't miss this annual treat!

To be held at
Blakes Road field, Wembdon (next to Church)
On

SATURDAY 29th October 2016

FIREWORK DISPLAY at 6.45p.m.

ADMISSION: - Adults £2 Children £1
Pre-school - FREE
(FAMILY TICKET: £5 for 2 adults and up to 3 children)

Hotdogs, soup, crisps, drinks available from 6.00 p.m. on the field

Over £1600 worth of brilliant aerial fireworks from
Skyburst Fireworks - professionally fired



FUN FOR ALL THE FAMILY
PLEASE WALK IF AT ALL POSSIBLE

No Sparklers or personal fireworks allowed on the field.
POLICE and FIRST AID PERSONNEL IN ATTENDANCE.

**Be there whatever the weather and support your local
Community Association.**

Anti-social Behaviour In response to residents concerns,

Wembdon Parish Council sought the advice of Sedgmoor District Council regarding the best course of action for residents affected in this way. Simon Bawler addressed the Council and gave the following advice:

There is a free hot line for recording incidents 0800 2982009.

Record the problem including date, time and place, plus description of the events, number of people and their personal description if it is safe to do so. Diary forms are available and can be posted or emailed out for this purpose. No-one should compromise their personal safety making these observations.

LITTER!

Wembdon Parkland – It's great to see an increase in people enjoying the open spaces new have created, but this has meant an increase in litter this summer. The main problem area has been adjacent to the swings where there are 2 litter bins only 20 metres away. Each morning volunteers pick-up most of the litter in an attempt to reduce the problem and maintain our environment but some inevitably blows across the sports fields and into the hedges and rhynes.

What can we do? – Educate our children... Challenge those who we see dropping litter... Leading by example, picking up litter wherever possible... Or, come along to Wembdon Give-An- Hour (or two) where we can tackle the harder to reach areas with likeminded people...

What has the Council done? WPC has provided another litterbin and dog poo bin at the bridge... Instructed the council grass cutting contractor to pick up as much litter as possible before cutting, although at cost...

KEEP WEMBDON LITTER FREE – WE CAN ALL PLAY OUR PART. Thank you! 😊



"Catch the Community Spirit"



"Catch the Community Spirit"



"Catch the Community Spirit"



"Catch the Community Spirit"

Contact your Parish Council

website: www.wembdon.org email: wembdonpc@gmail.com

Visit our Facebook page Wembdon parish council

Follow us on **twitter** @wembdonpc

Dates for your diary.

Please refer to hosting organisation in case of change.

Wembdon Parish Council Meeting – 3rd Monday of the month
(may be subject to change of date and venue).

Community Give-An-Hour (or Two) – Saturday 15th Oct 2016

WCA Fireworks Display – Saturday 29th October 2016

Pub Quiz at The Cottage Inn – last Tuesday of each month.

Wembdon Parish Council meet on the 3rd Monday of the month. This may be subject to change, notification will be via the website & notice boards whenever possible



Any Concerns?



What can your Parish Council do for you and your village? Does it need improving, installing, repairing, reviewing or removing? Please let us know about any issues or aspects of village life which we may be able to attend to. We welcome your positive feedback as well, so why not let us know if we did a good job too!

Advertise here. To advertise here or for more information please contact wembdonpc@gmail.com

A5: ½ page £20 ¼ page £10 mini £5 (b&w). If you would like to submit an entry about your club or village event please contact the Communication Team via WPC, as above.

Local contacts and information.

Wembdon Community Association (WCA): Graham Grief – 01278 457973

Wembdon Stores: tel: 01278 434815

The Cottage Inn: Opening hours Mon-Fri 6:00pm- 11:00pm
Sat & Sun 12noon- 4:00pm; 6:00pm-11:00pm tel: 01278 423259

St George's Church office: tel: 01278 423468 / Ed Moll tel: 01278 423647

Parish Centre: Pat Bright tel: 01278 457760

Beavers / Cubs / Scouts: Group Leader John Ennals tel: 07703 033 947

Brownies: Leader Sue Sly tel: 01278 410911

Cricket club: All cricket, pavilion hire, sponsorship & enquiries - Dan
Bingham tel: 07841 013 128. wembdoncricket@gmail.com

Football club: Caroline Fretwell englandbirdie@aol.com tel:07736045967

Wembdon Ladies: Lyn Poile tel: 01278 424431

Wembdon Toddlers: Thurs 10am-12noon Ceri Douglass tel: 01278 422702

Wembdon Sunshiners Pre-school: Jen Hillier tel: 01278 457100

Ladies keep Fit: Mon 9.45am-10:45am Viv Tolcher tel: 01278 424491

Art Group: Tues 10:00am-12:00pm Kay Robbins tel: 01278 423212

Jay Singers: Tues 7:30pm Tim Loveday tel: 01278 425422

Wembdon Bridge: Thurs 1:45pm Ernie Whitehead tel: 01278 424134

Sedgemoor Camera Club: Graham Shaw tel: 01278 422343

Sedgemoor Stitches: - Vanessa Leighton tel: 01278 662977

Travel Line: (local bus information) 0871 200 22 33